

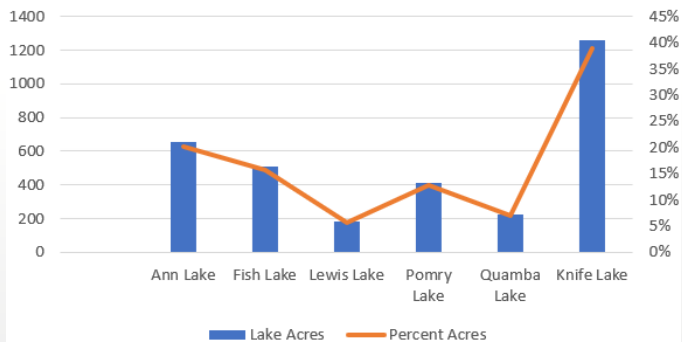
| Lake Name | Lake Acres | Acres Percent | Spray Acres | Spray Percent | Allocation \$ | Allocation % |
|--------------|-------------|---------------|--------------|---------------|---------------------|--------------|
| Ann Lake | 654 | 20% | 11 | 10% | \$ 3,536.91 | 15% |
| Fish Lake | 507 | 16% | 26 | 23% | \$ 3,954.18 | 17% |
| Lewis Lake | 179 | 6% | 5.6 | 5% | \$ 3,000.41 | 13% |
| Pomry Lake | 413 | 13% | 0 | 0% | \$ 3,417.69 | 14% |
| Quamba Lake | 227 | 7% | 18.5 | 17% | \$ 3,119.63 | 13% |
| 5 Lake Total | 1980 | 61% | 61.1 | 55% | \$ 17,028.82 | 71% |
| Knife Lake | 1260 | 39% | 50 | 45% | \$ 6,815.50 | 29% |
| Total | 3240 | 100% | 111.1 | 100% | \$ 23,844.32 | 100% |

Data Sources

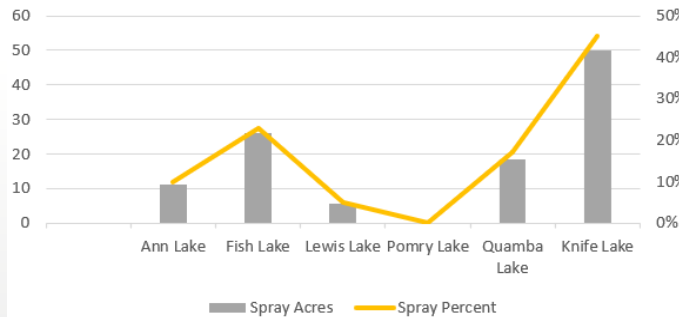
- [LakeFinder | Minnesota DNR \(state.mn.us\)](https://state.mn.us)
- COLA AIS Budget 10/6/2022
- Boat Inspection Report Kanabec County COLA AIS

Kanabec County Lakes Overview

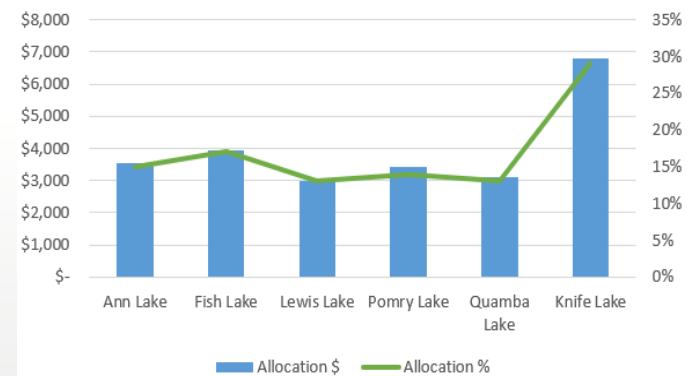
Kanabec County Lake Acres



Kanabec County Sprayed Acres



Kanabec County Lakes Allocation of Funds



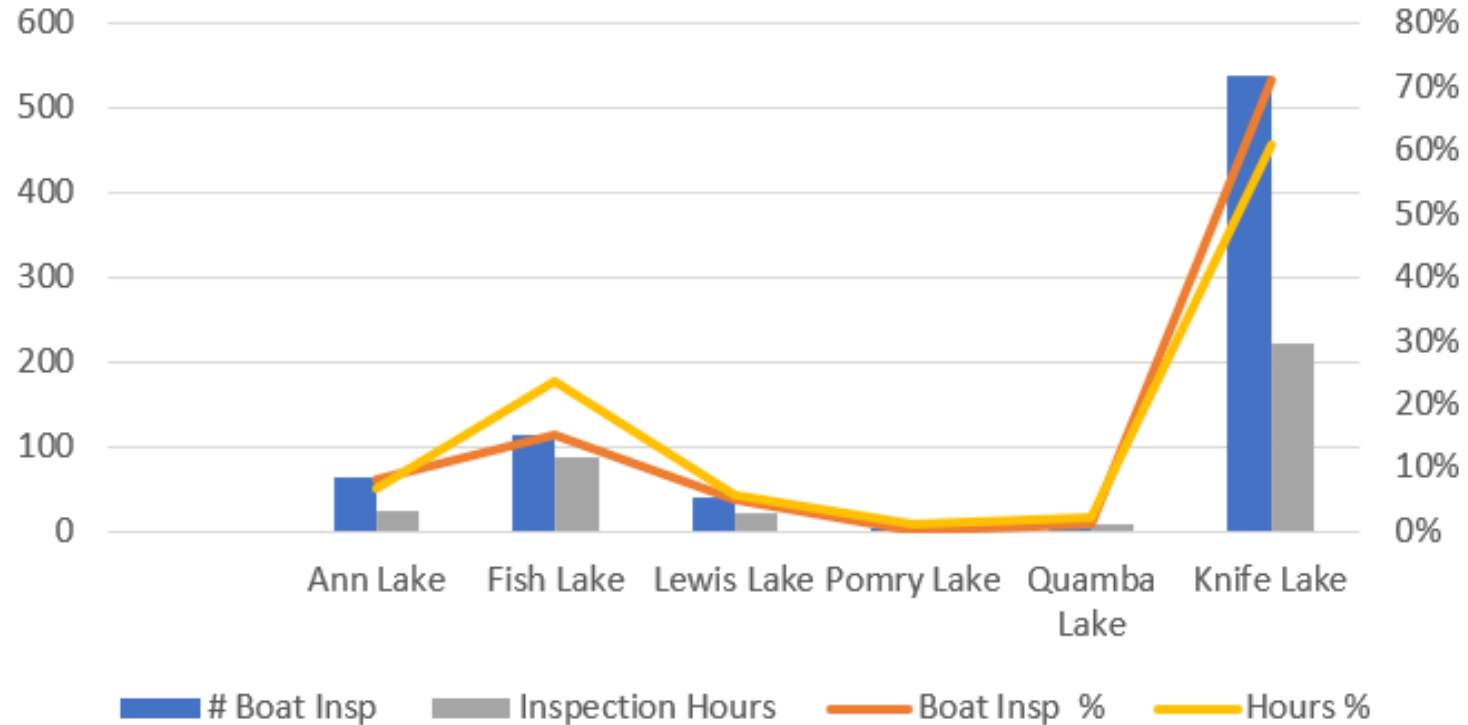
Data Sources

[LakeFinder | Minnesota DNR \(state.mn.us\)](https://state.mn.us)

COLA AIS Budget 10/6/2022

Boat Inspection Report Kanabec County COLA AIS

Kanabec County Lakes Boat Inspections



29% of boat inspections were on the total five lakes (1980 acres)
71% of boat inspections were on Knife Lake (1260 acres)

Data Source

Boat Inspection Report Kanabec County COLA AIS

Knife Lake Comparison

| Lake Name | Lake Acres | Percent Acres in County | Sprayed Acres | Percent sprayed of total acres | Allocation \$ | Allocation % |
|--------------|------------|-------------------------|---------------|--------------------------------|---------------|--------------|
| 5 Lake Total | 1980 | 61% | 61.1 | 55% | \$ 17,028.82 | 71% |
| Knife Lake | 1260 | 39% | 50 | 45% | \$ 6,815.50 | 29% |
| Total | 3240 | 100.00% | 111.1 | 100% | \$ 23,844.32 | 100% |

The five lakes receive at least 10 percent **more** in allocations for AIS treatment when compared to their percentage of lake acres in the county and the percentage of acres sprayed.

Knife Lakes receives 10 - 16 percent **less** in allocations for AIS treatment when compared to their percentage of lake acres in the county and the percentage of acres sprayed.

Knife Lake

- Hosts approximately 5 fishing tournaments in the summer (not including the KLSC fishing tournaments).
- Straightforward drive from the twin cities (60 miles directly north).
- North landing is easy to find (directly off Hwy 65).
- Two restaurants
 - One is accessible from the lake
 - Second is directly across the highway
- Three campgrounds
 - Two have direct access to the lake
 - Third is directly across the highway
- One convenience store with gas pumps with direct access to the lake

Talking Points

Consider allocating funds based on number of lake acres

- Would be approximately \$7.36/acre
- This would allocate to Knife Lake \$9,273 (currently allocated \$6,815.50)
- Other 5 lakes would have an allocation of \$14,454 (currently allocated \$17,028.82)

Consider allocating funds based on number of approved DNR treatment acres

- Knife Lake had 75 approved DNR treatment acres (2022); only 50 acres were treated due to lack of funding

Consider rolling funds to Knife Lake from other sources

- Carry over fund = \$12,586 (from Ann, Lewis and Pomroy)
- Contingency fund = \$24,568 (5% of gross annual allocation) \$2400 annually
- Decontamination unit fund = \$27,500
- Boat inspection fund = \$10,000 annually (surplus of \$6000)

KLID proposal

- Obtain \$5000 more annually in allocation for treatment of aquatic invasive species from other sources mentioned above.