

Request for Qualifications (RFQ):

Kanabec SWCD Land – parcel ID: 06.01075.00

Kanabec County, Grass Lake Township sec. 17



The Kanabec SWCD is seeking Request for Qualifications for producer(s) / manager(s) for the operation and management of our owned 120 acres at the described location above. Attached map for reference. As a reference for the management to this land, please refer to the Quickclaim Deed covenants and the Conservation Management Plan located on our website. (www.kanabecswcd.org/district-land/)

Cropland: (16.2 acres, (3 fields); 4.9 ac., 2.8 ac. & 8.5 ac.):

- The next year's cropland management and crop selection will be negotiated with the selected producer and the District Land committee each fall with full SWCD Board approval at the November Board Meeting.
- Currently the SWCD Board is requesting Kernza to be planted on the cropland. [Home - Kernza®](http://kernza.org) (<http://kernza.org>)
- The selected producer bears all crop expenses, has all the risk in the crop and retains all income from the crop.
- The selected producer(s) will pay the Kanabec SWCD an annual rental fee (\$30/ac.) payable to the Kanabec SWCD by Nov. 1 of each year. The rental fee is to cover taxes on the cropland, plus a nominal fee to go into a fund for maintenance/education on the land, (actual 2021 cropland taxes, \$228)

Hay Land – Options:

1. Managed hay lands for wildlife – mowing allowed 1/ year after August 1 to allow adequate habitat for ground nesting birds – no fee charged
2. Mowing the dryland (non-native grass & non-cropland areas) will be an option to be included with the agreement with the selected cropland producer
3. To mow the hay land – to pay the Kanabec SWCD by Nov. 1 of each year - \$15/ac

Other Wildlife Lands: – includes all of the remaining land of the 120 acres, minus the cropland and hay lands. This includes two areas planted to native grasses/forbs, an old farmstead site (no buildings, has monitoring well), an unimproved lane (access easement to land to the south) and assorted woodlands (mixed deciduous/oak, tamarack bog and various aspen/hybrid aspen stands)

Land Open to Public Hunting

*The selected producer(s) / manager(s) will provide proof of insurance annually to the Kanabec SWCD – producer / manager may request to view the minimum coverage terms.

A contract will be drawn up between the Kanabec SWCD and the selected producer(s) / manager(s) for up to a five-year period for the services provided.

Any management plan for this land will be reviewed and negotiated annually (Dec. – Jan.) with approval from the Kanabec SWCD Board.

Include in your proposal, answers to these questions:

1. Which land(s) (cropland, hay land and/or wildlife land) are you interested in operating / managing?
2. What interests do you have in operating / managing this land?
3. Please list which conservation practices you would be interested in incorporating into the management of this land?
4. What capabilities do you have for the various land management using conservation practices such as reduced tillage, cover crops, mowing, burning, woodland management practices, growing small grain or others?
5. Explain your interest or ideas you have concerning conservation education / on site workshops, etc.?

RFQ Due: Mon., Feb. 7, 4:30 pm, 2022

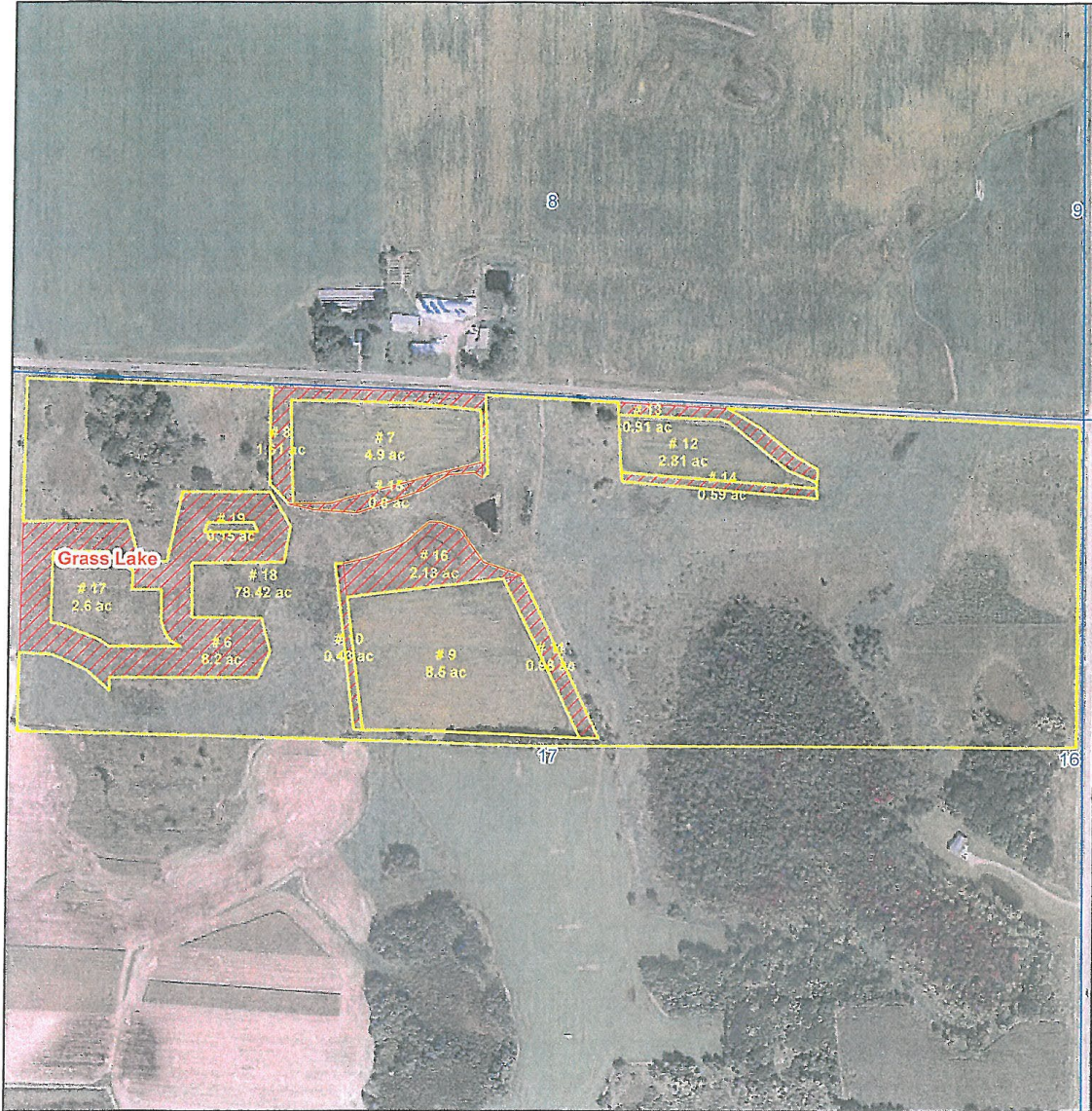
Please submit via. mail, e-mail or in-person to:

Kanabec SWCD

2008 Mahogany St Ste 3

Mora MN 55051

Questions: please call 320-679-1391 or email Deanna@KanabecSWCD.org



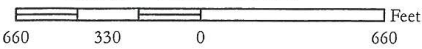
16.2 Acres Cropland

- Yellow outline
- CRP
- Civil Townships
- Sections



120 ac. Total

1:5,940 1 inch = 495 feet



Maps are for graphical purposes only. They do not represent a legal survey.

